



sales@orientinsulators.com
<http://www.lv-insulators.com>

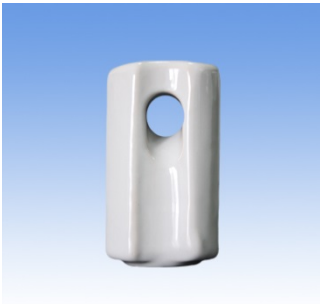
Chapter 2

LV Insulator Types

2.1 ANSI 54 porcelain stay insulator

By Orient Power

ANSI 54 porcelain stay insulator



Orient Power

sales@orientinsulators.com
<http://www.lv-insulators.com>

The common types of stay insulator:

ANSI standard 54 series

AS standard: GY series

African country used: 400V-33kv

Material

ANSI ceramic stay insulator made by porcelain

ANSI 54 types

ANSI C29.4 series have four different types:

- ANSI 54-1,
- ANSI 54-2,
- ANSI 54-3,
- ANSI 54-4,

ANSI 54-1 is different from other types, because 54-1 has four horns however another type has eight horns.

Color of ANSI 54 porcelain stay insulator:

The colors are various, following are color types:

- White
- Brown
- Grey
- Blue

Technical data terms of ANSI 54-1, 54-2, 54-3, 54-4 separately:

Creep age distance (mm): 41, 48, 57, 76.

Mechanical failing load: 44kN, 53kN, 89kN, 89kN.

Power frequency flashover voltage (kV)

Dry: 25, 30, 35, 40.

Wet: 12, 15, 18, 23.